

SMAD6 Antibody (monoclonal) (M07)**Mouse monoclonal antibody raised against a partial recombinant SMAD6.****Catalog # AT3946a****Specification**

SMAD6 Antibody (monoclonal) (M07) - Product Information

Application	WB, E
Primary Accession	O43541
Other Accession	NM_005585
Reactivity	Human
Host	Mouse
Clonality	Monoclonal
Isotype	IgG2b Kappa
Calculated MW	53497

SMAD6 Antibody (monoclonal) (M07) - Additional Information**Gene ID** 4091**Other Names**

Mothers against decapentaplegic homolog 6, MAD homolog 6, Mothers against DPP homolog 6, SMAD family member 6, SMAD 6, Smad6, hSMAD6, SMAD6, MADH6

Target/Specificity

SMAD6 (NP_005576, 285 a.a. ~ 384 a.a) partial recombinant protein with GST tag. MW of the GST tag alone is 26 KDa.

Dilution

WB~~1:500~1000

E~~N/A

Format

Clear, colorless solution in phosphate buffered saline, pH 7.2 .

Storage

Store at -20°C or lower. Aliquot to avoid repeated freezing and thawing.

Precautions

SMAD6 Antibody (monoclonal) (M07) is for research use only and not for use in diagnostic or therapeutic procedures.

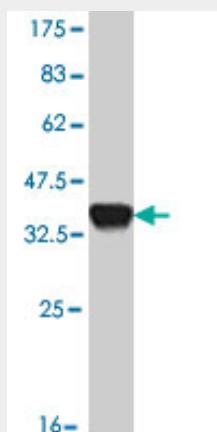
SMAD6 Antibody (monoclonal) (M07) - Protocols

Provided below are standard protocols that you may find useful for product applications.

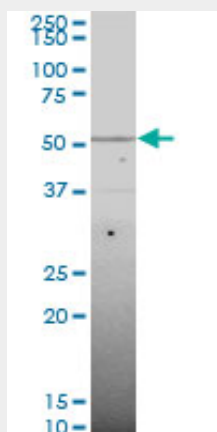
- [Western Blot](#)
- [Blocking Peptides](#)

- [Dot Blot](#)
- [Immunohistochemistry](#)
- [Immunofluorescence](#)
- [Immunoprecipitation](#)
- [Flow Cytometry](#)
- [Cell Culture](#)

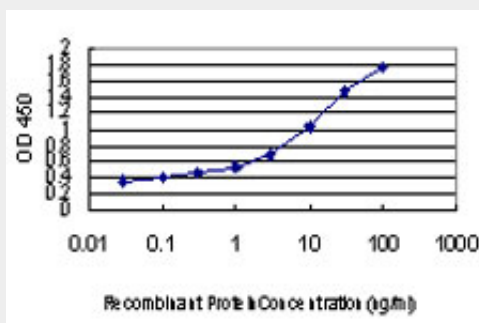
SMAD6 Antibody (monoclonal) (M07) - Images



Antibody Reactive Against Recombinant Protein. Western Blot detection against Immunogen (36.74 KDa) .



SMAD6 monoclonal antibody (M07), clone 4F4. Western Blot analysis of SMAD6 expression in MCF-7 ((Cat # AT3946a)



Detection limit for recombinant GST tagged SMAD6 is approximately 0.03ng/ml as a capture antibody.

SMAD6 Antibody (monoclonal) (M07) - Background

The protein encoded by this gene belongs to the SMAD family of proteins, which are related to *Drosophila* 'mothers against decapentaplegic' (Mad) and *C. elegans* Sma. SMAD proteins are signal transducers and transcriptional modulators that mediate multiple signaling pathways. This protein functions in the negative regulation of BMP and TGF-beta/activin-signalling. Multiple transcript variants encoding different isoforms have been found for this gene.

SMAD6 Antibody (monoclonal) (M07) - References

Smad2 and Smad6 as predictors of overall survival in oral squamous cell carcinoma patients. Mangone FR, et al. *Mol Cancer*, 2010 May 12. PMID 20462450. Association of TGFB2 polymorphism with risk of sudden cardiac arrest in patients with coronary artery disease. Tseng ZH, et al. *Heart Rhythm*, 2009 Dec. PMID 19959123. Downregulation of SMAD2, 4 and 6 mRNA and TGFbeta receptor I mRNA in lesional and non-lesional psoriatic skin. Yu H, et al. *Acta Derm Venereol*, 2009. PMID 19688145. Bone mass effects of a Smad6 gene polymorphism in Japanese postmenopausal women. Urano T, et al. *J Bone Miner Metab*, 2009. PMID 19277452. A new nonsense mutation of SMAD8 associated with pulmonary arterial hypertension. Shintani M, et al. *J Med Genet*, 2009 May. PMID 19211612.